

Situation Report-2, Southeastern Floods in Bangladesh

22 August 2024



Red Crescent Youth (RCY) volunteers of Bangladesh Red Crescent Society (BDRCS) reaching out to the stranded people with safe drinking water and dry food support in Noakhali. Photo: BDRCS Noakhali Branch

Overall Situation:

Over **440,000 families** are stranded in floodwater and almost **3 million people** are affected by the ongoing floods in Bangladesh. The ongoing floods affected 357 unions in eight districts.¹ **Bangladesh Red Crescent Society (BDRCS)** mobilised its local volunteers in the affected districts and is continuously on the ground, supporting the affected families. BDRCS has also started mobilizing resources from its National Headquarters (NHQ). More than 1,000 Red Crescent Youth (RCY) and 50 staff engaged by BDRCS in the response effort.

Sunamganj, Moulvibazar, Habiganj, Feni, Cumilla, Noakhali, Khagrachari, and Chattogram inundated due to heavy rainfall and upstream flooding and the torrential rains have worsened the situation. The Bangladesh Meteorological Department (BMD) has issued warnings of heavy to very heavy rain in parts of Chattogram, Sylhet, Barishal, and Mymensingh divisions, with a gradual decrease expected from 23 August. Rivers are rising significantly due to heavy rainfall in Tripura, India, and the unusual intensity of rain in Sylhet and Chattogram is attributed to a well-

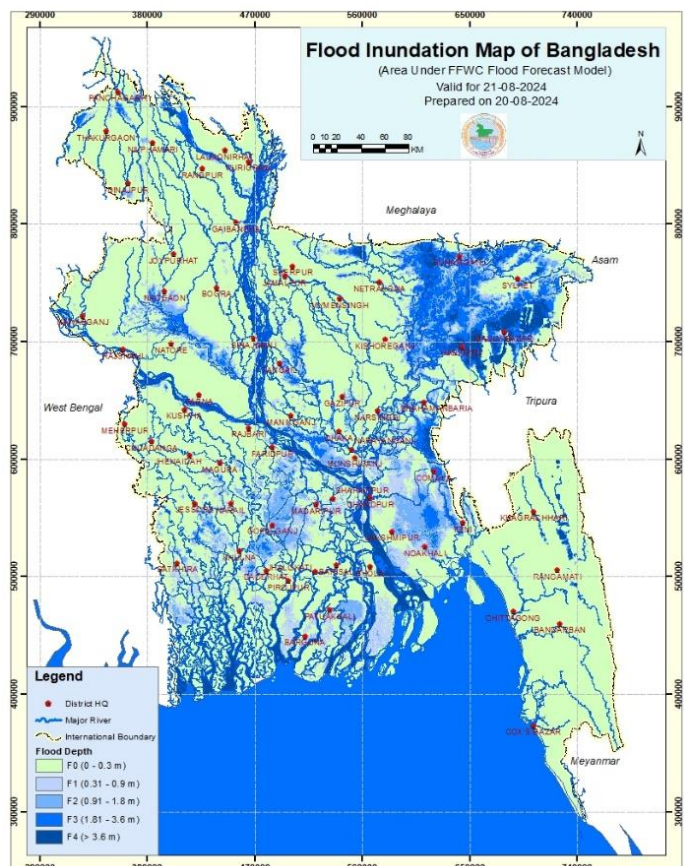


Figure: Inundation Map of 21 August 2024 by FFWC

¹ This information was shared by the Ministry of Disaster Management and Relief (MoDMR) today (22 August) afternoon, source: [Prothom Alo](#).

marked low-pressure system over southern Bangladesh. Due to adverse weather, maritime ports have been advised to hoist lower cautionary signals.

Impact on affected Districts:

Feni District:

Severe flooding has affected Fulgazi, Parshuram, Chhagalnaiya, Daganbhuiyan and Feni sadar— leaving over 100 villages submerged and more than 100,000 people stranded. The floods have submerged roads, ponds, and cropland, with water reaching the roofs and tin sheds of houses in some areas. Residents have been forced to seek refuge elsewhere. Local authorities and volunteer organizations are distributing relief aid to affected communities. Meanwhile, the Army and Navy, Border Guard Bangladesh (BGB), and coast guards have been deployed in Feni for rescue operations in Parshuram and Fulgazi upazillas (sub-districts). According to the Feni District Commissioner, 1,600 people have taken shelter in 78 designated shelter centres. The rescue efforts involve speed boats and helicopters, as reported by the Inter-Services Public Relations (ISPR).



Red Crescent volunteers in Feni branch packing dry food for distribution.
Photo: BDRCS

Noakhali District:

Kompaniganj and Hatiya upazillas (sub-districts) are fully inundated by floodwaters, while Subarna Char, Sonaimuri, Noakhali Sadar, Kabir Hat, and Senbag upazillas have been partially affected. The flooding has submerged houses, roads, and marketplaces, with water levels reaching waist-deep in some areas and knee-deep inside homes. The rising floodwaters have devastated farmlands, particularly Aman paddy seedbeds and vegetable fields, preventing farmers from planting crops and severely impacting livelihoods. As fears of further flooding grow, residents are calling for military assistance to recover the canals and drain the water, demanding immediate action to address the crisis.

Cumilla District:

A total of 64 unions and 220 villages have been affected by the flooding, impacting 47,770 individuals, with 36,045 people stranded. In Choddogram, Cumilla Sadar, Burichang, Debidwar, Muradnagar, Brahmnpura, Meghna, Titas, Nangolcoat, and Barura upazillas, floodwaters have partially inundated areas, particularly affecting low-lying residences. In response, 14 shelter centers have been opened. Additionally, Cumilla Sadar South has experienced landslides in five locations across two unions.

Brahmanbaria District:

The situation in Brahmanbaria's Akhaura upazilla is dire, as floodwaters from India have inundated the land port and surrounding villages. Heavy rains that began on the night of 20 August led to water pouring in from across the border, affecting at least ten villages. The flooding caused the collapse of a temporary bridge on the Akhaura-Agartala road, bringing traffic to a standstill. Additionally, knee-deep water inside the immigration area has compounded the difficulties for passengers.

Habiganj District:

In Habiganj, water levels have reached historic highs, breaking 50-year records as reported by the Flood Forecasting and Warning Centre (FFWC). The Khowai River in Habiganj is currently flowing at 11 meters, significantly surpassing its danger level of 9.05 meters.

Moulvibazar District:

More than 80,000 people have been stranded as 208 villages in Moulvibazar have gone underwater due to rising floodwaters. In Kulaura, roads have already been damaged, and the banks and barriers of the Manu River have been compromised, with water levels continuing to rise.

Khagrachari District:

In Khagrachari, several upazillas—including Khagrachari Sadar, Dighinala, Mohalchari, Manikchari, Panchari, Guimara, and Ramghare—are experiencing severe flooding due to heavy rains, landslides, and rising water levels in the Khagrachari Maini and Kachalong rivers. Approximately 82 villages and 7000 households have been affected. The flooding has also submerged parts of the Khagrachari-Sajek road, stranding around 250 tourists in Sajek. The situation has led to landslides in multiple upazillas, including Khagrachari Sadar and Dighinala, affecting 30 villages and trapping about 4,500 families. Currently, around 2,000 families have sought refuge in relief centers. The Khagrachari Red Crescent Unit is actively engaged in rescue and evacuation efforts. Immediate assistance is needed in the form of hygiene kits, food packages, shelter kits, and cash support. More than 300 families in the district's flood-hit areas have taken refuge in shelter centres. A total of 99 shelter centres have been opened by the local government throughout the district, where dry/cooked food is being provided to those taking shelter.



Red Crescent volunteers helping a family to evacuate in Khagrachari district. Photo: BDRCS

Bandarban District:

Naikhangchari upazilla is under warning for a potential landslide due to ongoing weather conditions. Meanwhile, in Bandarban Sadar upazilla, the village of Mohammadpur, where 400 households have been destroyed, is experiencing severe flooding as the Sangu River's water level nears the danger mark. The rising water heightens the risk of further flooding in nearby low-lying areas, making the situation increasingly critical.

Rangamati District:

Baghaichari and Langadu upazilla are affected – especially the Yaringchari union in Langadu Rangamati is currently submerged under floodwaters, affecting about 9,000 people across eight unions and one municipality. The district administration has allocated 25 tons of food grains, and 55 shelter centres have been established, accommodating 1,655 people receiving cooked food.

Chattogram District:

In Chattogram, Mirersharai and Fatikchari have been severely affected by flooding due to excessive rainfall. In Fatikchari, the Halda River dam has been damaged, causing water to inundate the surrounding areas. Additionally, Sitakundo has also been partially impacted, with low-lying areas submerged. Chattogram's rail

communication with Dhaka and other parts of the country has been suspended since this morning as sections of rail tracks in Feni were submerged in floodwater

Cox's Bazar District:

In Cox's Bazar, Toitong union in Pekua upazilla is severely affected by floodwaters. Ramu upazilla was Partially affected. Additionally, a landslide triggered by excessive rainfall on 18 August 2024, in Pekua upazilla tragically resulted in the deaths of a mother and her two children.

Priority Needs:

- Search and Rescue for evacuation support for affected people and livestock
- First Aid
- Dry Food
- Pure Drinking Water
- Non-Food Items (NFIs) - Candle, Lighter, water jerrycans, tarpaulin etc.
- Personal Protective Gear (PPE) - Gum Boot, Raincoat, Umbrella
- Medical Team
- Food Package
- Multi-purpose cash support
- Fuel
- Cooking Facilities
- Hygiene item
- Mobile Latrine

BDRCS Actions:

- BDRCS continues to engage volunteers in disseminating warning messages through public service announcements (PSAs), supporting evacuations, and distributing cooked and dry food in collaboration with the local government. In Bandarban, including Naikhangchari, 70-80 volunteers are focused on warning message dissemination. In Khagrachari, 190 volunteers, including 50 from the BDRCS unit and 140 from upazillas, are involved in these activities. Additionally, 70-80 volunteers in Langadu are assisting with early warnings and evacuations alongside local authorities.
- BDRCS Resource Mobilization Department has been coordinating with the corporate sectors for fund raising to strengthen the response efforts. A [fund raising and donation campaign initiated today \(22 August\)](#) and individual donors have been donating to support the flood affected people.
- BDRCS put the response support team from its NHQ on standby to support the flood response operations. Currently, the branches are engaged in the operation with the local capacity and technical support from the NHQ.
- BDRCS is mobilizing seven boats from the Chattogram warehouse to support rescue operations in affected areas in Chattogram, Feni, Noakhali, and Cumilla.
- BDRCS has allocated 7-day food packages: 1,000 packages for Feni, 500 packages for Chattogram and 500 packages for Noakhali. Each package contains 7.5 kg of rice, 1 kg of lentils, 1 kg of sugar, 1 kg of salt, and 3 liters of soybean oil.
- 3,000 packets of dry food will be distributed through local procurement to the most affected areas.
- A total of BDT 750,000 has been mobilized for cooked/emergency dry food distribution: BDT 250,000 for Feni, BDT 200,000 for Cumilla, BDT 200,000 for Noakhali, and BDT 100,000 for Khagrachari. BDRCS has deployed two water treatment plants with 1,100 jerrycans in Feni district and plans to deploy three additional Mobile Water Treatment Plants for seven days.

- BDRCS with the support of Grameen Phone Limited is in process to provide 7 days food packages for 10,000 households, deployment of 5 water treatment plants and 5 mobile medical teams to provide emergency humanitarian assistance across the most affected districts
- The Swedish Red Cross is mobilizing an Initial Response fund of BDT 1,000,000 for emergency response to the southeastern flood.
- BDRCS along with IFRC and in-country Participating National Societies (PNSs) has been closely monitoring the situation since the beginning of the flood and has been coordinating with the government, other non-government organizations.
- BDRCS is exploring activation of Quick Action Fund (QAF) of BDT 3,000,000 from the American Red Cross.
- IFRC GO platform² has been updated.

Government Approaches:

- The Ministry of Disaster Management and Relief has allocated BDT 18,700,000 (USD 155,413 approx) in cash, 15,900 metric tons of rice, and 15,000 packets of dry food for flood-affected areas.
- Teams from the Bangladesh Army, Navy, BGB, and Coast Guard have arrived in Feni and have commenced rescue operations.

Photos of the Situation on Ground and some of the BDRCS



Photos: BDRCS volunteers are actively distributing dry foods in Feni and Noakhali.

² IFRC GO aims to make all disaster information universally accessible and useful to IFRC responders for better decision making.



Photos: The image depicts the flood situation in Khagrachari's Dighinala and Naikhongchari in Bandarban. BDRCS volunteers are actively engaged in evacuation efforts and disseminating early warning messages to assist affected communities.



Photos: The image illustrates the flood situation in Rangamati. Floodwaters have submerged large areas, impacting communities and infrastructure. Relief efforts are ongoing, with visible signs of emergency response activities and support for affected individuals.



Photos: The image captures the flood situation in Cumilla, showcasing the extent of the inundation affecting various areas.

Contact for Further Information:

Kazi Shofiqul Azam, Secretary General, BDRCS, secretarygeneral@bdracs.org

Md. Mijanur Rahman, Director, Disaster Response, BDRCS, mdmjanur.rahman@bdracs.org

Over **3 million** people stranded as floods hit Feni, Noakhali, and other districts in Bangladesh. Bangladesh Red Crescent Society is on the ground providing rescue support, dry food, and safe drinking water.

Every **DONATE NOW**
DONATION COUNTS