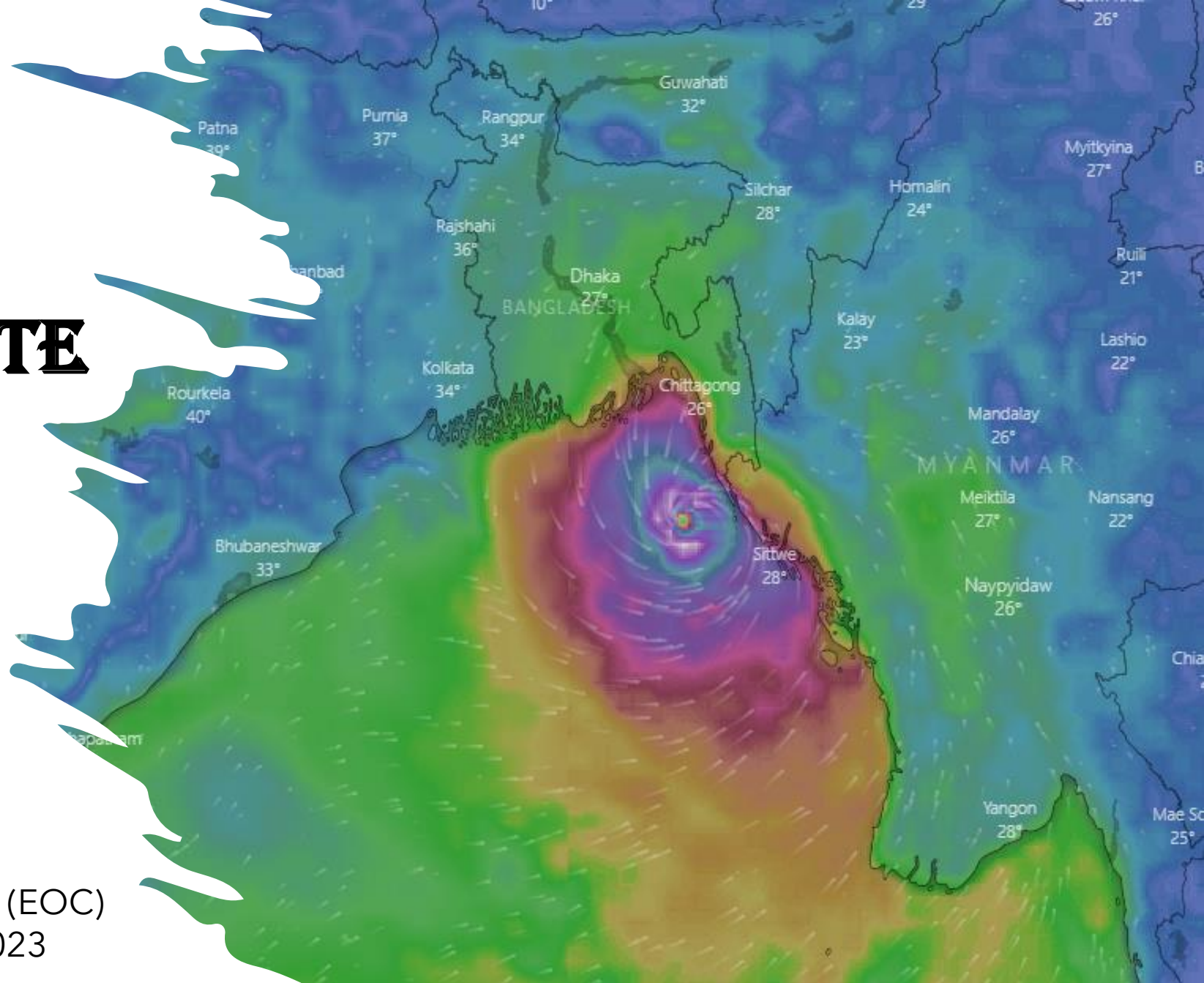


# MONITORING & SITUATION UPDATE

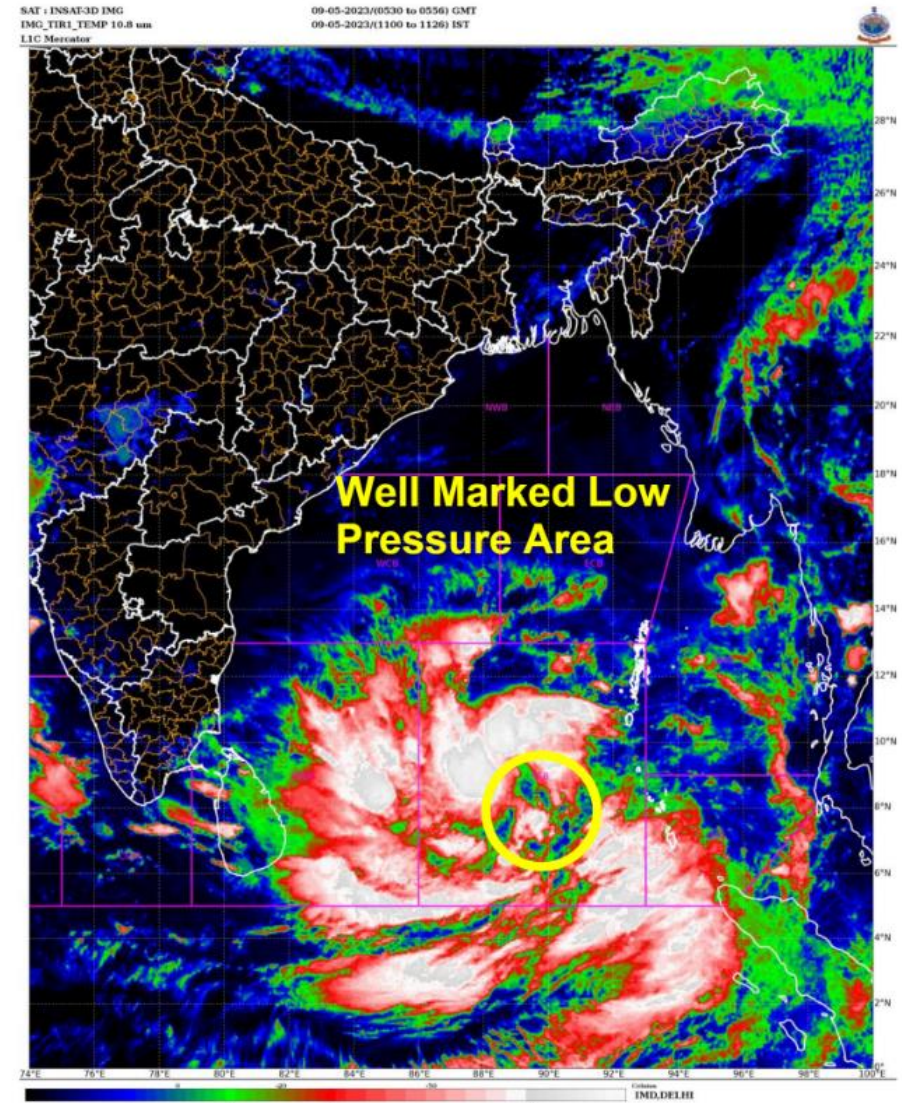
## CYCLONE “MOCHA”

Venue: Emergency Operation Centre (EOC)  
Time & Date: 04:00pm, 09 May 2023



# FORECASTED SITUATION (BMD & IMD)

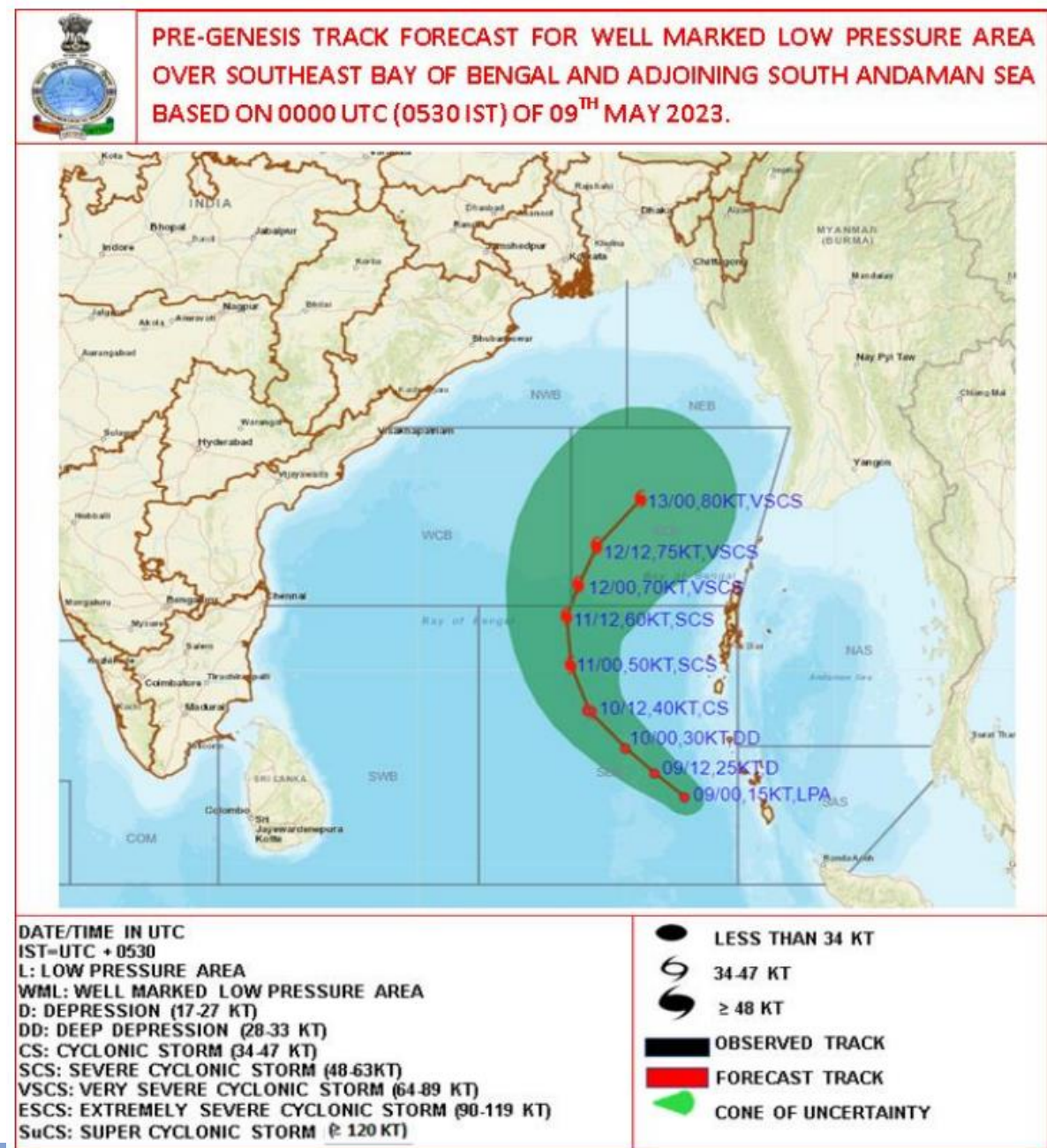
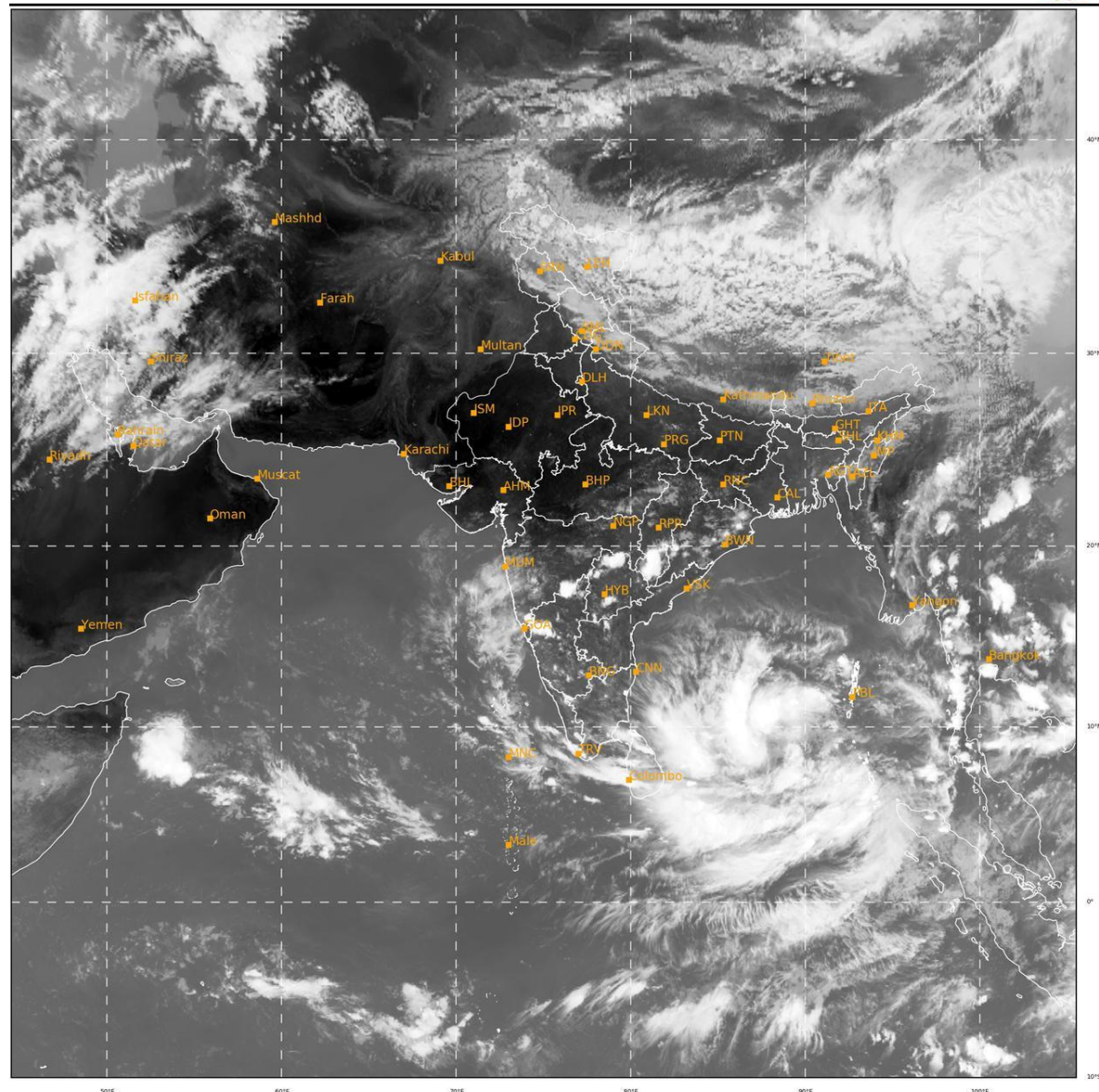
- Low-pressure area over southeast Bay of Bengal and adjoining south Andaman Sea has intensified into a well-marked low over the same area at midnight of May 9.
- It is likely to intensify into a depression by today evening over the same region and subsequently into a cyclonic storm over southeast Bay of Bengal and adjoining areas of east central Bay of Bengal and Andaman sea on 10th may.
- It is likely to move initially north-northwestwards towards east central Bay of Bengal till 11th May. Thereafter, it is likely to recurve gradually and move north-northeastwards towards Bangladesh-Myanmar coasts.



**PROBABILITY OF CYCLOGENESIS (FORMATION OF DEPRESSION) DURING NEXT 120 HRS:**

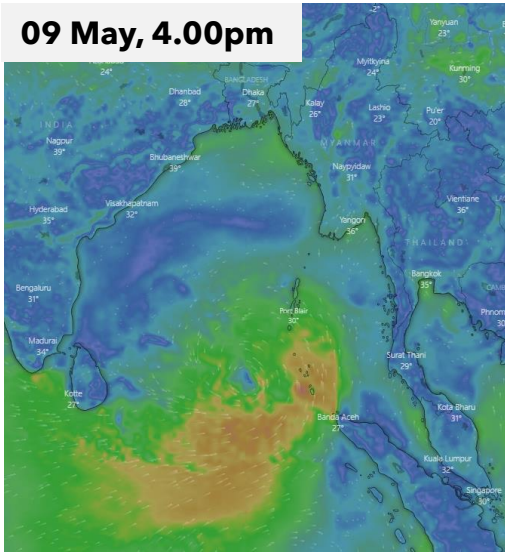
24 HOURS	24-48 HOURS	48-72 HOURS	72-96 HOURS	96-120 HOURS
HIGH	HIGH	HIGH	HIGH	HIGH



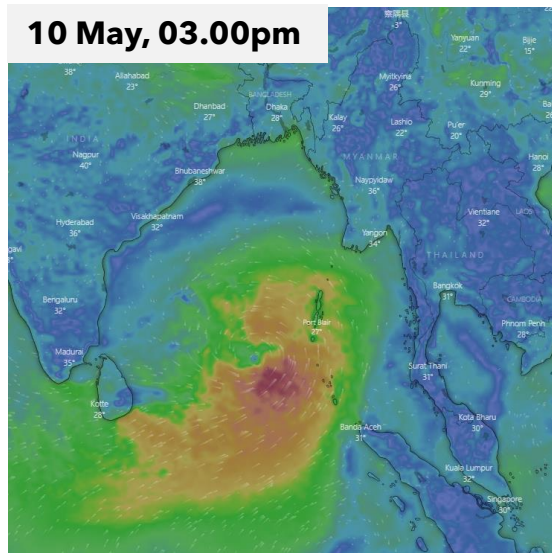




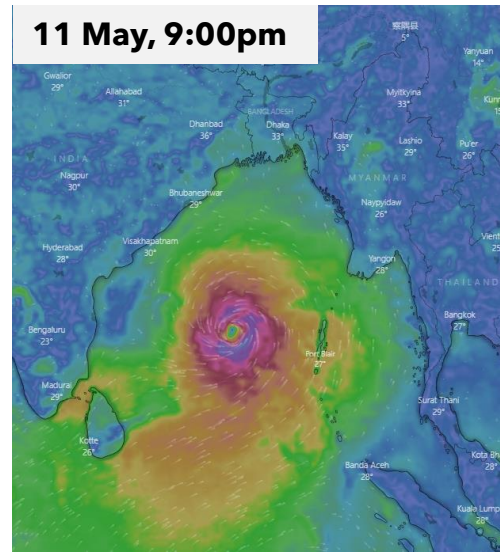
**09 May, 4.00pm**



**10 May, 03.00pm**



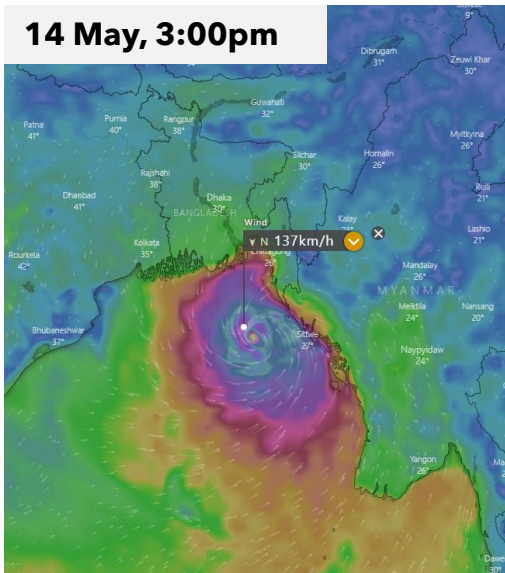
**11 May, 9:00pm**



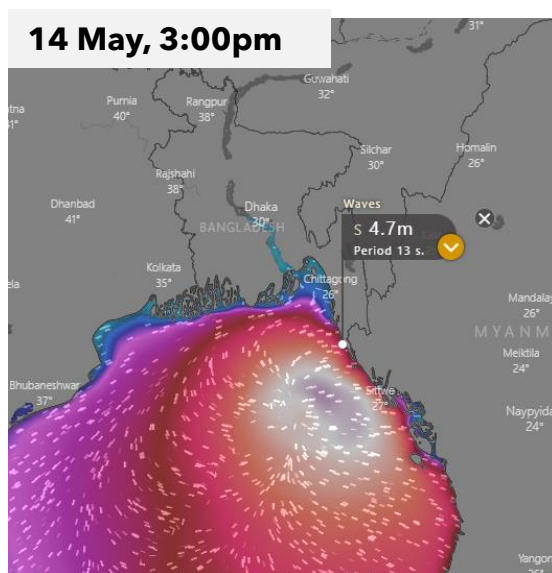
# FORECASTED SITUATION (ECMWF):

- The Cyclone may make landfall on the coastal zone of Bangladesh (high impact on south-east coastal districts) and west coast of Myanmar by the evening of May 14
- Surge height would be 3.3-5.8 meter.

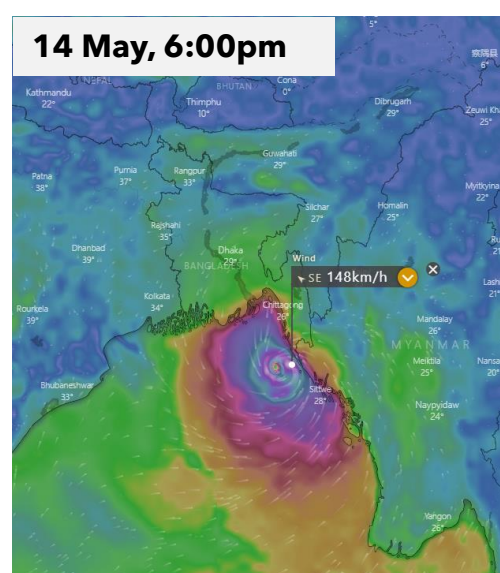
**14 May, 3:00pm**



**14 May, 3:00pm**



**14 May, 6:00pm**

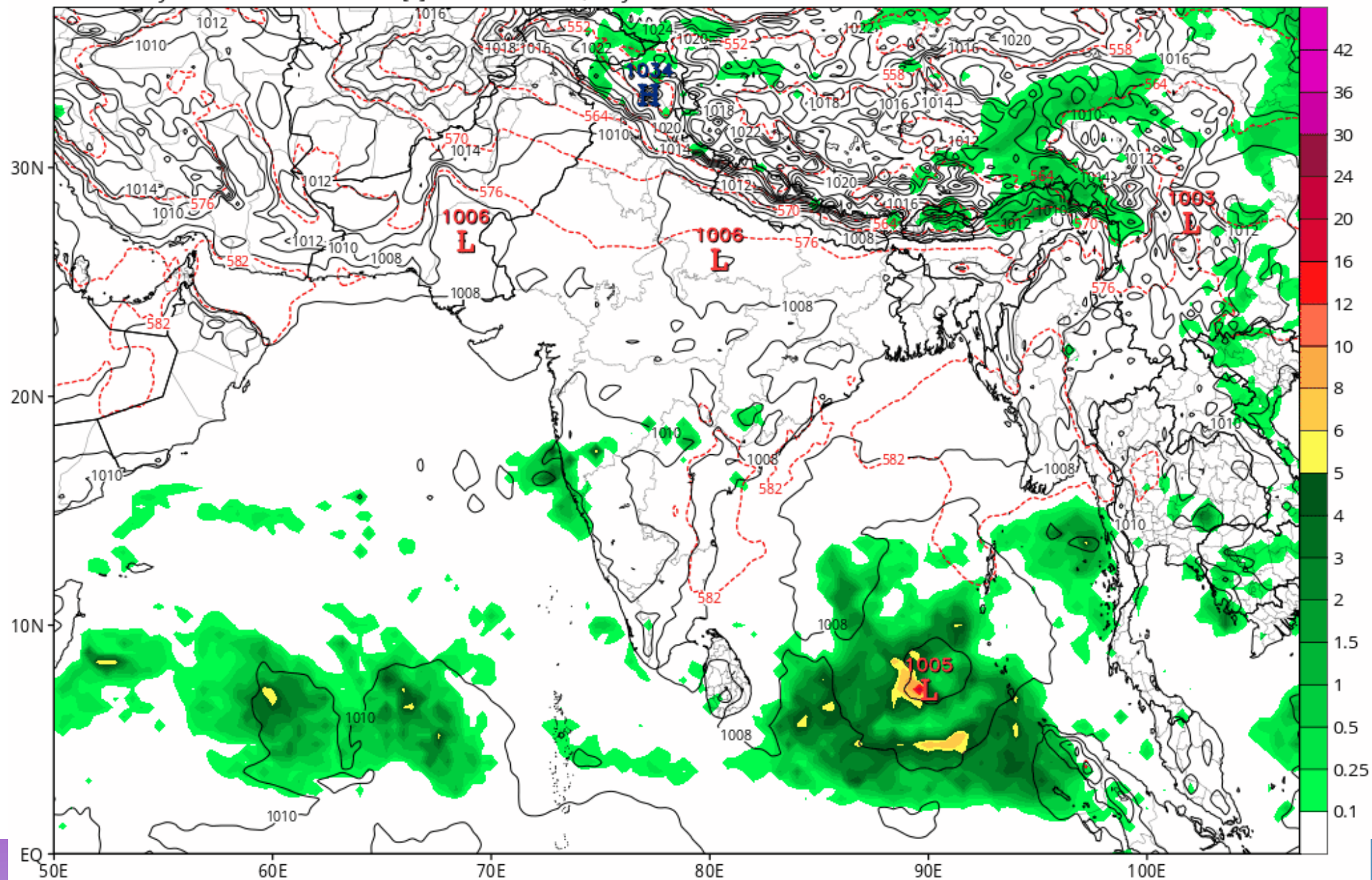




# ECMWF 3-hour Averaged Precip Rate (mm/hr), MSLP (hPa) & 1000-500mb Thickness (dam)

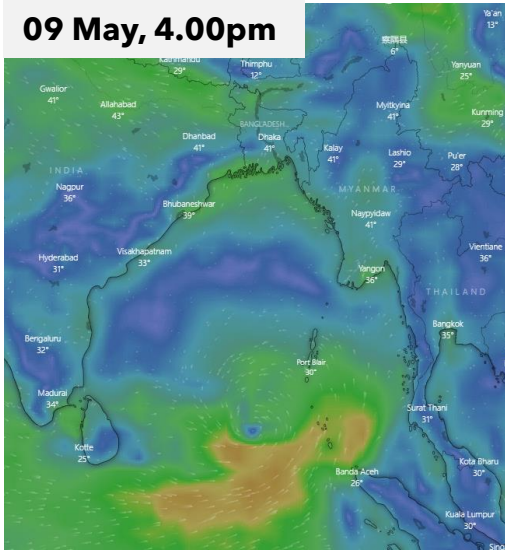
Init: 00z May 09 2023 Forecast Hour: [3] valid at 03z Tue, May 09 2023

TROPICALTIDBITS.COM

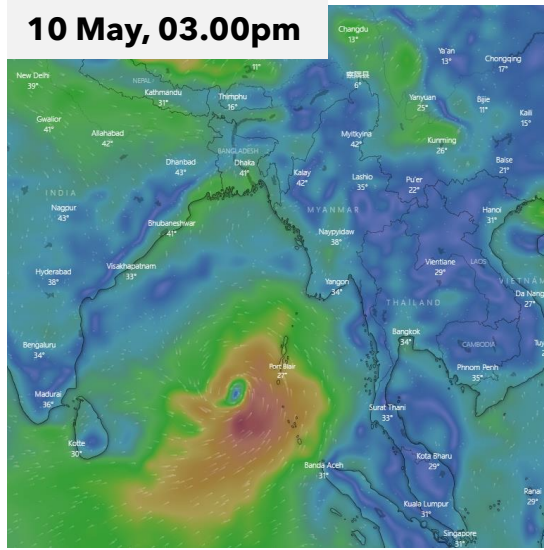




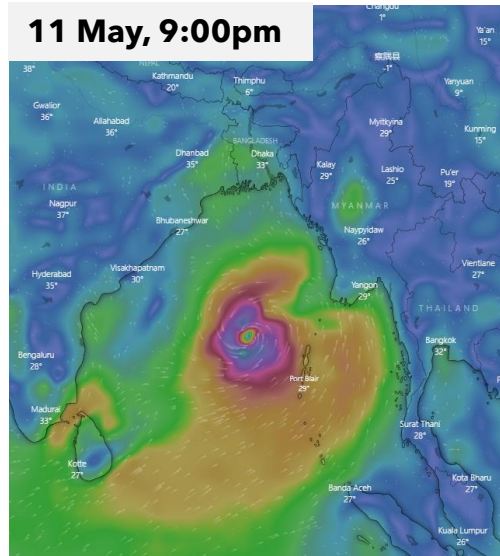
**09 May, 4.00pm**



**10 May, 03.00pm**



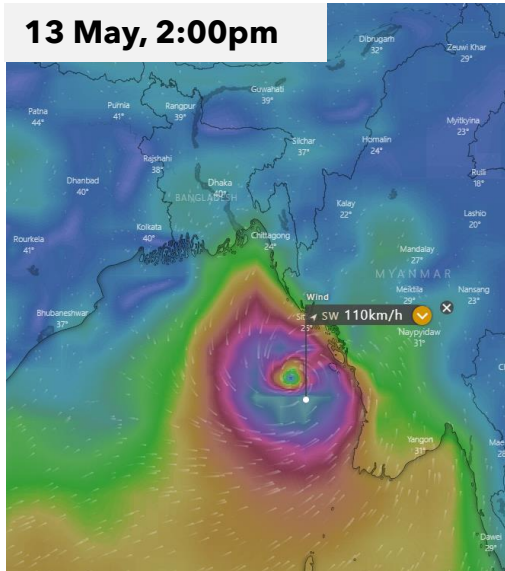
**11 May, 9:00pm**



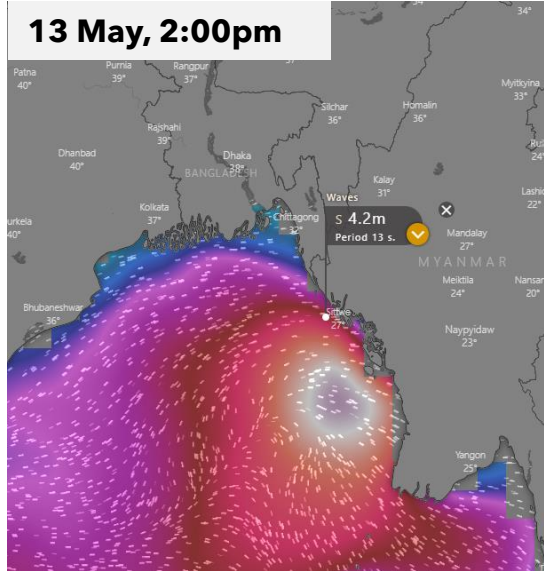
# FORECASTED SITUATION (GFS):

- The Cyclone may make landfall on the west coast of Myanmar by the evening of May 13 may have impact on the Cox's Bazar coast of Bangladesh
- Surge height would be 3.2-6.5 meter.

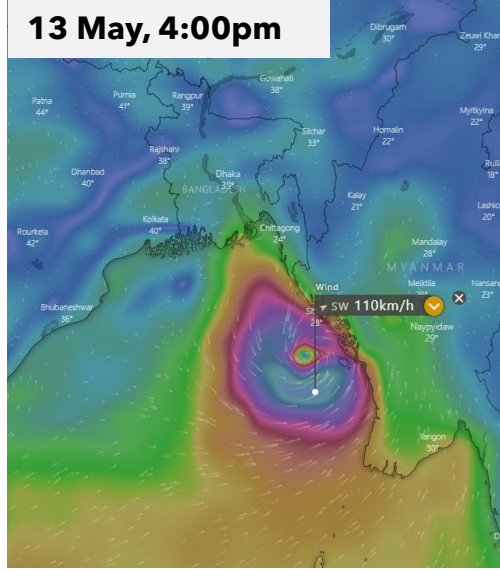
**13 May, 2:00pm**



**13 May, 2:00pm**



**13 May, 4:00pm**

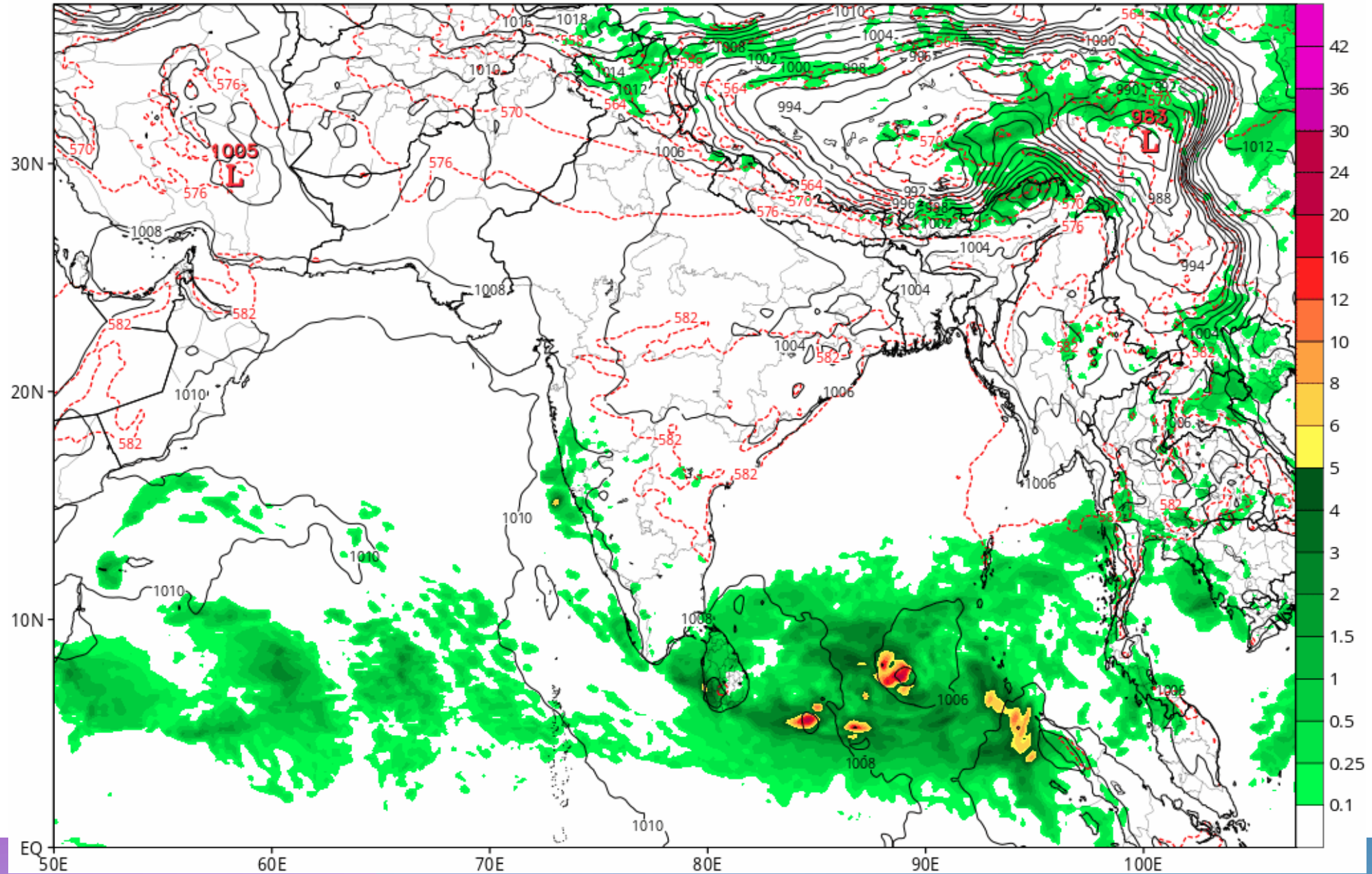




# GFS 6-hour Averaged Precip Rate (mm/hr), MSLP (hPa) & 1000-500mb Thickness (dam)

Init: 00z May 09 2023 Forecast Hour: [6] valid at 06z Tue, May 09 2023

TROPICALTIDBITS.COM



# Forecast summery on Cyclone Mocha Landfall

Source	Potentiality of Cyclone Formation	Time of Landfall	Landfall Location	Max. Wind Speed	Max. Surge Height	Rainfall
BMD	Yes	13 May Midnight to 14 May Noon	South and south-east coast of Bangladesh	N/A	N/A	moderate to moderately heavy
IMD	Yes	13 May Midnight to 14 May Noon	Bangladesh-Myanmar coasts	N/A	N/A	moderate heavy to heavy rainfall
ECMWF	Yes	May 14 3:00 pm BST	Coastal districts of Bangladesh (high impact on south-east coastal districts) and west coast of Myanmar	148km/h	5.8m	moderate heavy to heavy rainfall
GFS	Yes	May 13 2:00 pm BST	West coast of Myanmar (may have impact on the Cox's Bazar coast)	110km/h	6.5	moderate heavy to heavy rainfall



## BDRCS FbF/A EAP Activation Triggers

### Stage I: Pre-Activation

"When BMD issues a **Signal 4 or above** warning with a **lead time of 72 hours** or more" AND/OR " **BMD / IMD / ECMWF / GFS** (at least two models) forecasts **wind speeds of 125 km/h or greater** in the coastal districts of Bangladesh with a lead time of 72 hours or more AND with a **potential damage of 25% household** asset of the respective Unions".

### Stage II: Activation

"When BMD issues a **Signal 7 or above** warning with a **lead time of 30 hours** or more" AND/OR "**BMD / IMD** forecasts **wind speeds of 125 km/h or greater** in the coastal districts of Bangladesh with a lead time of 30 hours or more AND with a **potential damage of 25% household** asset of the respective Unions".

# Cyclone Mocha

Active RCY Volunteers of Units date on 09 May 2023

Sl. No	Names of Unit	No of Active RCY Volunteers at District level	Name of Upazila (where Upazila RCY committee exists)	No of Active RCY Volunteers at Upazila level	What are the available sources of emergency Dry food items
01.	Cox's Bazar	300	9	450	Available
02.	Chattagram	400	10	750	Available
03.	Noakhali	350	4	60	Not sure
04.	Bhola	50	6	90	Available
05.	Potuakhali	120	7	300	available
06.	Pirujpur	100	7	200	Available
07.	Barisal	100	9	135	Available
08.	Borguna	185	-	155	Available
09.	Khulna	100	7	140	Available
10.	Satkhira	35	6	105	Available
11.	Bagerhat	60	4	60	Not sure
12.	Laxmipur	50	-	70	Available
13.	Feni	90	-	75	Available
14.	Jhalokathi	70	-	90	Available



## BDRCS Contingency Stock Update: Upto May 2023

SN	Items	Dhaka	Chittagong	Cox's Bazar	Total
1	Tarpaulins	11,593	11,140	2,000	24,733
2	Shelter toolkits	754	107	5,000	5,861
3	Emergency shelter kits			7,450	7,450
4	Bucket	1,000	3,815		4,815
5	Jerry can	7,746	13,535	500	21,781
6	Hygiene Parcel	5,800	100	3,790	9,690
7	Family tent		2,155		2,155
8	Floor/ sleeping Mat	2,382	6,200		8,582
9	Kitchen Set	900	1,199		2,099
10	Mosquito net	500	4,000		4,500
11	Dead body bag	1,846			1,846
12	Blanket	6,589			6,589
13	Plastic bag (Empty)	30,000			30,000
14	Aquatabs water Puri. Tablet	2,00,000			2,00,000

**THANK YOU**

